

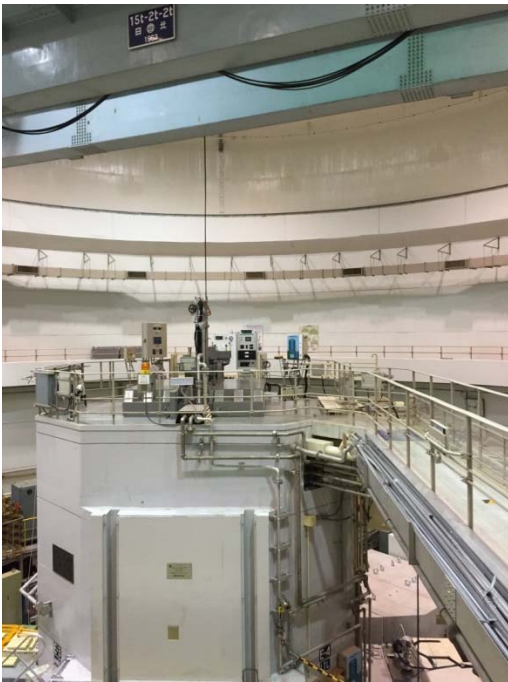
Research Activity Report
Supported by “Leading Graduate Program in Primatology and Wildlife Science”
 (Please be sure to submit this report after the trip that supported by PWS.)

2014. 5.15

Affiliation/Position	Wildlife Research Center/M1
Name	Natsuko Tajima

1. Country/location of visit
Kyoto pref., Osaka pref.,Wakayama pref.,Aichi pref.
2. Research project
Inter-laboratory, Biological Science
3. Date (departing from/returning to Japan)
2015.4.6, 2015.4.8-2015.4.11 (5days)
4. Main host researcher and affiliation
Research Reactor Institute, Seto Marine Biological Laboratory, Shirahama Aquarium, Kyoto City Zoo, Center for Ecological Research, Primate Research Institute, Japan Monkey Center
5. Progress and results of your research/activity (You can attach extra pages if needed)
Please insert one or more pictures (to be publicly released). Below each picture, please provide a brief description.
In the Inter-lab, 6th April, and from 8th to 11th April, first year students of biological science course in Kyoto University visited for 8 institutions of Kyoto University and learned what kinds of researches are conducted.
Schedule 6th April: Welcome lecture 8th April: Kyoto University Research Reactor Institute, Seto Marine Biological Laboratory 9th April: Seto Marine Biological Laboratory, Shirahama aquarium 10th April: Kyoto city Zoo, Center for Ecological Research of Kyoto University 11th April: Primate Research Institute, Japan Monkey Center
Summaries • 6th April: Welcome lecture We heard the presentations of young researchers in Biological science course about their researches. It was very interesting for me.
• 8th April: Kyoto University Research Reactor Institute, Seto Marine Biological Laboratory We visited for Kyoto University Research Reactor Institute first. We took the lectures about Nuclear power reactor and saw the facilities. We could see the fuel rod inside the Nuclear power reactor, and operating tables for treatments of BNCT. Then, we stayed at Seto Marine Biological Laboratory.

Research Activity Report
Supported by “Leading Graduate Program in Primatology and Wildlife Science”
(Please be sure to submit this report after the trip that supported by PWS.)



Nuclear power reactor



Fuel rod of Nuclear power reactor



The light for operation

• 9th April: Seto Marine Biological Laboratory, Shirahama aquarium
We heard the lectures from the professors at Seto Marine Biological Laboratory about their researches in acorn barnacle, sea spiders, and amphipods. Then, we went to Shirahama aquarium and visited the backyard.

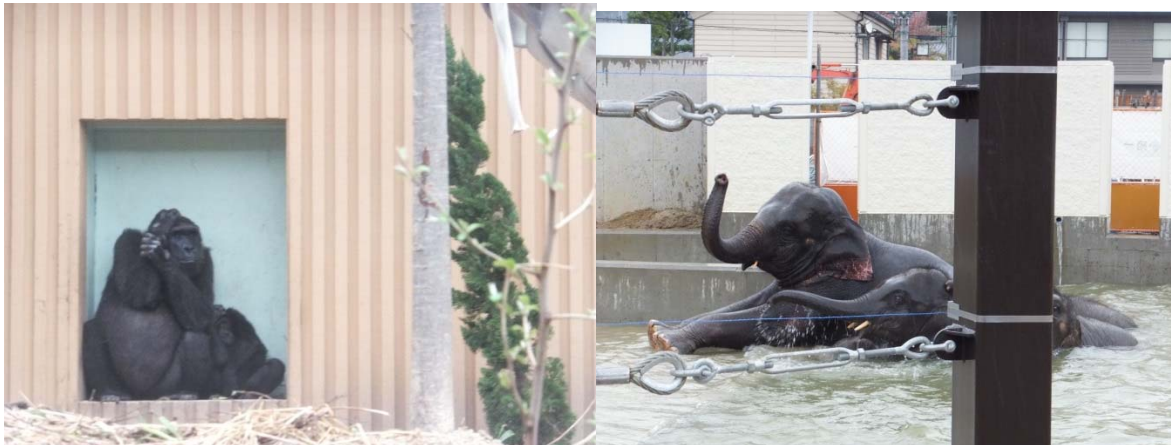
Research Activity Report
Supported by “Leading Graduate Program in Primatology and Wildlife Science”
(Please be sure to submit this report after the trip that supported by PWS.)



Water tank from backyard of Shirahama aquarium

• 10th April: Kyoto city Zoo, Center for Ecological Research of Kyoto University

We visited Kyoto city zoo in the morning under the Prof. Tanaka's guidance. We could see the stuffed animals and skeletal specimen of animals which had kept in the zoo. I could compare the weight of skull of giraffe and hippopotamus. It was very good experience. In the afternoon, we visited to Center for Ecological Research of Kyoto University and saw some researches. There were very variable researches in this center, so it was very interesting.



Mother and child gorilla is taking shelter from the rain

Child Elephants is playing together

Research Activity Report
Supported by “Leading Graduate Program in Primatology and Wildlife Science”
(Please be sure to submit this report after the trip that supported by PWS.)



Skeletal specimen of hippopotamus



The skull of giraffe

11th April: Primate Research Institute, Japan Monkey Center

We visited Primate Research Institute in the morning. We observed the captured chimpanzees and Japanese macaques. In the afternoon, we visited Japan Monkey center. We had the lecture about the history of Monkey center and observe the center. I was surprised that there were so many formalin specimens in the center. I thought this center was the very good place to research and to enjoy.



The place for Chimpanzees



The place for keeping skeletal specimen

Research Activity Report
Supported by “Leading Graduate Program in Primatology and Wildlife Science”
(Please be sure to submit this report after the trip that supported by PWS.)



Chimpanzee family is grooming

6. Others

I would like to express my gratitude to staffs in Research Reactor Institute, Seto Marine Biological Laboratory, Shirahama Aquarium, Kyoto City Zoo, Center for Ecological Research, Primate Research Institute, Japan Monkey Center for supporting us. And I would also like to express my gratitude to PWS program for supporting this program.