

Research Activity Report
Supported by “Leading Graduate Program in Primatology and Wildlife Science”
 (Please be sure to submit this report after the trip that supported by PWS.)

2015.10.22

Affiliation/Position	PRI/M1
Name	Shintaro Ishizuka

1. Country/location of visit

Kinkazan-island, Miyagi Prefecture

2. Research project

Research about Japanese macaques and deer

3. Date (departing from/returning to Japan)

2015.10.5-10.10 (6 days)

4. Main host researcher and affiliation

Dr. Tsuji

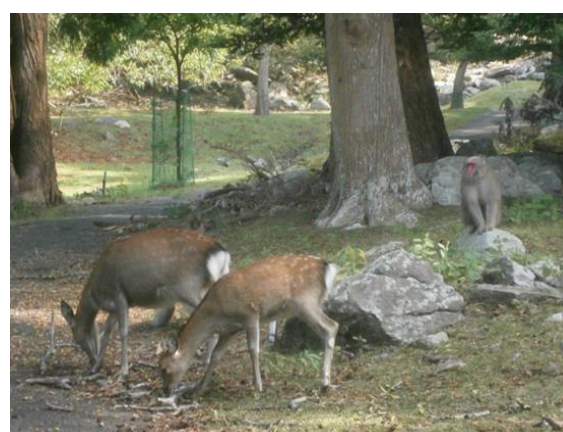
5. Progress and results of your research/activity (You can attach extra pages if needed)

Please insert one or more pictures (to be publicly released). Below each picture, please provide a brief description.

From 5th to 10th October, I visited Kinkazan island, Miyagi Prefecture. To develop skills of fieldwork study and obtain methods about ecological research, I went with Dr. Tsuji and an internship student, Ilham. In Kinkazan, there are so many monkeys and deer. So through observation for them, I got interested in direct interaction between them. So I followed A troop of monkeys and recorded sex and age classes of individuals, place, and details of their behaviors. Observation period was from 7th to 9th. And as a result I recorded 9 approaches, 2 gazes, 3 threatens from deer to monkey. In all interaction triggered by deer monkeys escaped. And through my observation, two hypotheses occurred to me: 1 Interaction between monkey and deer would happen at the place where there are many deer. 2 Interaction between monkey and deer would happen at the place which is much valuable for both species. In the future I want to verify them. In this trip experience of ecological research, life in hutte, intense communication with foreign internship student,, everything would help for my research. After this I want to visit many field and enlarge my views of wildlife. And also it is important to appreciate and respect previous field works.



Ecological research



Monkey and deer

6. Others

This program was supported by PWS Leading Program. I would like to appreciate this program and Assistant Professor. Tsuji, and Research Center for Monkeys at Miyagi Prefecture.