

Research Activity Report
Supported by “Leading Graduate Program in Primatology and Wildlife Science”

2018. 7. 2

| | |
|-----------------------------|-------------------------------|
| Affiliation/Position | Wildlife Research Center (D1) |
| Name | Kristin Havercamp |

| |
|--|
| 1. Country/location of visit |
| Shirahama (Seto Marine Biology Lab), Kyoto (City Zoo), Otsu (CER) & Inuyama (PRI and JMC), Japan |
| 2. Research project |
| PWS Inter-Lab |
| 3. Date (departing from/returning to Japan) |
| 2018. 4. 3 – 2018. 4. 8 (6 days) |
| 4. Main host researcher and affiliation |
| Asakura-san, Goto-san, Tanaka-san, Ishida-san, Okamoto-san, Hayakawa-san and others, Kyoto University |
| 5. Progress and results of your research/activity (You can attach extra pages if needed) |
| Please insert one or more pictures (to be publicly released). Below each picture, please provide a brief description. |
| As new students in the Department of Biological Science, the inter-lab course provided us with the opportunity to visit laboratories and institutes of Kyoto University outside of our own department. |
| We first visited the Seto Marine Biology Lab in Shirahama which is located at the sea in southern Honshu. We were given a few hours to explore the Minakata Kumagusu Museum, which I greatly enjoyed, received introduction lectures by five faculty members, had tours of the different facilities there and visited the aquarium. I was absolutely amazed to see a Spiny red gurnard (<i>Chelidonichthys spinosus</i>), among other sea creatures, for the first time (pictures below). On our second day we also had some free time, so Maegan and I walked to a beach where it is rumored that the extra fine sand comes all the way from Australia (which to me, seems a disappointing waste of energy and resources!). |
| We visited the Kyoto City Zoo and had a tour, including going into the back room of the elephant enclosures. It was my second visit there, but I appreciated the explanations of what goes on behind the scenes at the zoo. We also saw Sato-san and others attempting to conduct eye tracking experiments with the chimpanzees. After visiting the zoo, we left for the Center for Ecological Research where we received a greeting from the director and introductions from three researchers working there. We then toured the facilities; I was especially impressed by the lab working in stable isotope research. |
| The final part of inter-lab was a visit to the Primate Research Institute (PRI) and Japan Monkey Center (JMC). As I do some collaborative work at PRI I was already familiar with both places, but again appreciated the chance to have a formal tour. It was the first time I saw the mini museum/historical document exhibition room of PRI. We also visited the chimpanzee Sky-Lab and the Japanese macaque outdoor enclosure. After touring JMC, I headed back to PRI. I extended my trip and remained there because I had planned meetings with a visiting researcher to work on the Bossou Video Archive. |
| Being able to visit the many different labs and institutes outside of Kyoto University main campus was a nice experience. We met many professors and other graduate students, who we may form collaborations with sometime in the future. I also really enjoyed meeting and getting to know other new Master and PhD students in WRC and other departments. |
| (Photos on following page.) |

Research Activity Report
Supported by “Leading Graduate Program in Primatology and Wildlife Science”



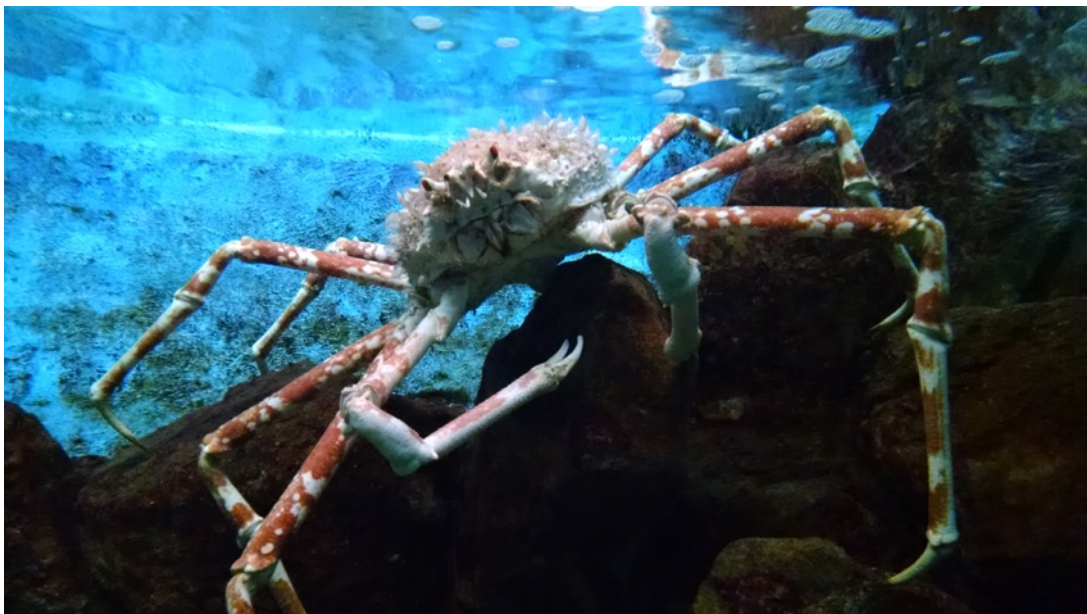
A view of the Shirahama Aquarium from the beach.



A small (hermit?) crab in the sea.



Watching the sunset.



I believe this is a Japanese spider crab(?)..!

Research Activity Report
Supported by “Leading Graduate Program in Primatology and Wildlife Science”



A spiny red gurnard (*Chelidonichthys spinosus*).



Artwork by Koko the gorilla (left) and Zamba and Loi (right) displayed at the current exhibition at JMC.

6. Others

I am thankful to PWS for providing me with the opportunity to participate in Inter-Lab and to all organizers and hosts of the week.